

ECONOMICAL TENSION LOAD CELL FOR ACCURATE IN-LINE FORCE MEASUREMENT

TLL SERIES



CAPACITY RANGES:
500, 1,000, 2,000,
3,000 LBS.

Our TLL Series load cells are offered as an economical method for accurately measuring in line tension forces. Best results are obtained when loaded through spherical rod end bearings or similar "universal" mechanical linkage. Ranges 500 through 3,000 lbs. are anodized aluminum, and ranges 5,000 through 50,000 lbs. are manufactured from heat treated 17-4ph stainless steel. The TLL Series sensing areas and cable exit are moisture protected for semi-controlled environments.



CAPACITY RANGES:
5K, 10K, 20K, 30K,
50K LBS.

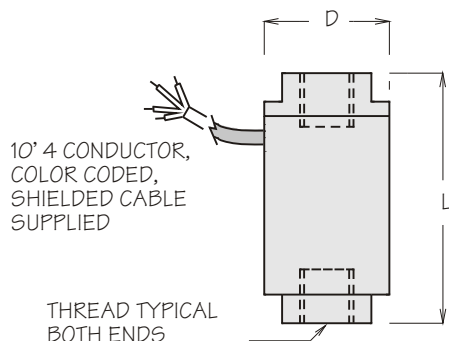
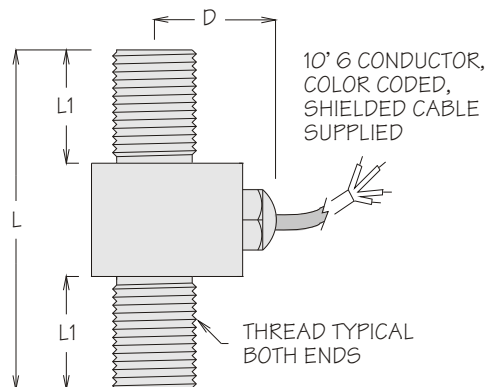
SPECIFICATIONS

Options available with TLL-5K thru TLL-50K only
-PTB - Connector twist lock (PT02A-10-6P)

Rated Output (R.O.):	2 mV/V nominal	Temp Effect on Output:	0.005% of Load/°F
Nonlinearity:	0.25% of R.O.	Temp. Effect on Zero:	0.005% of R.O./°F
Hysteresis:	0.25% of R.O.	Terminal Resistance:	350 ohms nominal
Nonrepeatability:	0.1% of R.O.	Excitation Voltage:	10 VDC
Zero Balance:	1.0% of R.O.	Safe Overload:	150% of R.O.
Compensated Temp. Range:	60° to 160°F	DEFLECTION	
Safe Temp. Range:	-65° to 200°F	TLL-500 thru TLL-3K:	0.003 inches
		TLL-5K thru TLL-50K:	0.005 inches

DIMENSIONS (INCHES)

MODEL	CAPACITY LBS.	L	L1	D	THREAD	WT. OZS.
TLL-5K	5,000	3.50	1.125	1.500	3/4-16 UNF	8
TLL-10K	10,000	3.50	1.125	1.500	3/4-16 UNF	8
TLL-20K	20,000	3.75	1.250	1.600	1-14 UNS	14
TLL-30K	30,000	4.25	1.500	1.700	1 1/4-12 UNF	24
TLL-50K	50,000	5.00	1.875	1.825	1 1/2-12 UNF	40



DIMENSIONS (INCHES)

MODEL	CAPACITY LBS.	DIA.	L	THREAD	THREAD DEPTH	WT. OZS.
TLL-500	500	.750	1.500	1/4-28 UNF	.250	.5
TLL-1K	1,000	.875	1.750	3/8-24 UNF	.375	.6
TLL-2K	2,000	.875	1.750	3/8-24 UNF	.375	.7
TLL-3K	3,000	1.25	2.000	1/2-20 UNF	.500	1.0