

**PW37P...**

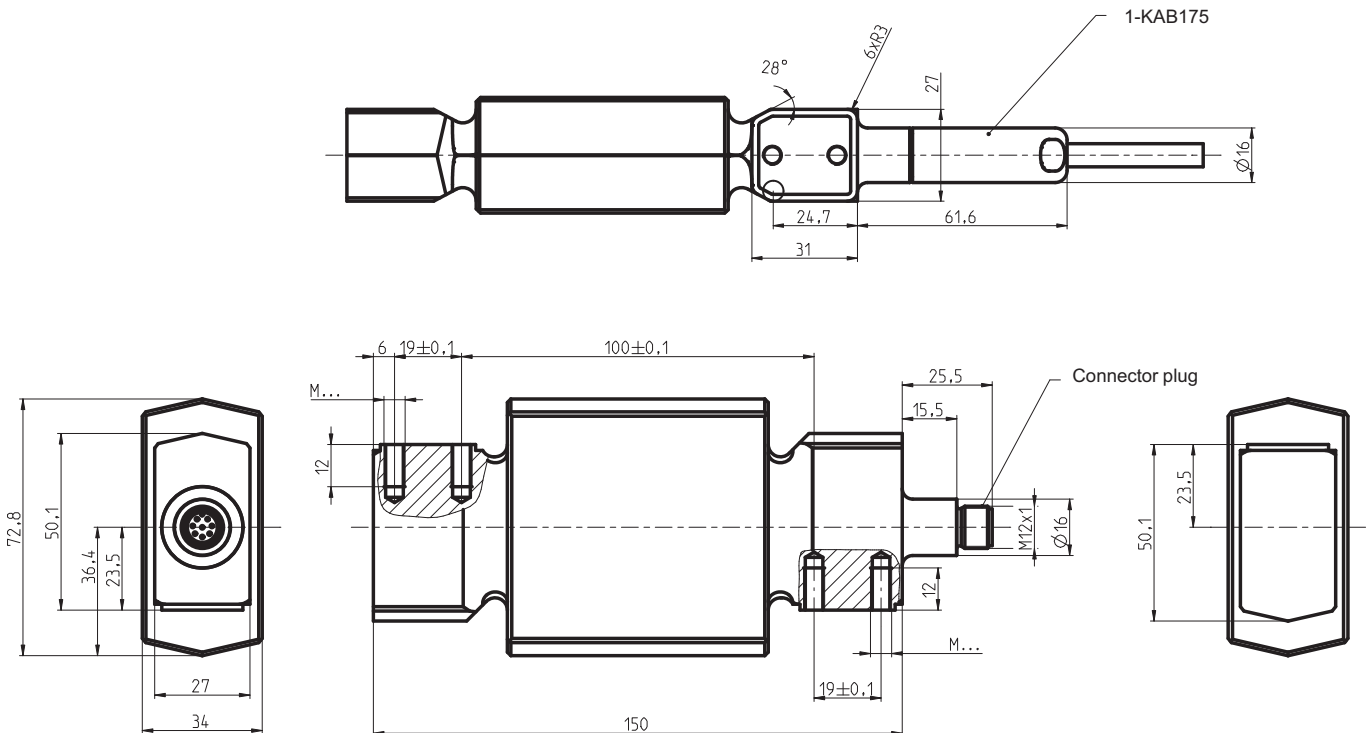
## “Hygienic design” single-point load cell

## Special features

- **Maximum capacities 50 kg, 100 kg, 200 kg**
- **Stainless steel**
- **High ratio of minimum verification interval Y**
- **EHEDG-certified**
- **Easy to clean**
- **“Hygienic design” M12 connection cable**



Dimensions in mm (1 mm = 0.03937 inches)



Maximum capacity 50 kg, 100 kg	M6
Maximum capacity 200 kg	M8

## Specifications

Type			PW37P...		
Accuracy class <sup>1)</sup>			C3 Multi Range (MR)		
Number of load cell verification intervals	n <sub>LC</sub>		3000		
Maximum capacity	E <sub>max</sub>	kg	50	100	200
Minimum load cell verification interval for PW37P	v <sub>min</sub>	g	5	10	20
Maximum load cell verification interval for PW37P	Y		10,000		
Temperature coefficient of the zero signal per 10 K for PW37P	TC <sub>0</sub>	% of C <sub>N</sub>	±0.0140		
Minimum load cell verification interval for PW37PY	v <sub>min</sub>	g	2	5	10
Maximum load cell verification interval for PW37PY	Y		25,000	20,000	
Temperature coefficient of the zero signal per 10 K for PW37PY	TC <sub>0</sub>	% of C <sub>N</sub>	±0.0056	±0.0070	±0.0070
Maximum platform size		mm	600 x 600		
Rated output (nominal)	C <sub>N</sub>	mV/V	2.0 ±0.2		
Zero signal (without initial load)			0 ±0.2		
Temperature coefficient of sensitivity per 10 K <sup>2)</sup> in the temperature range +20 ... +40°C -10 ... +20°C	TC <sub>S</sub>	% of C <sub>N</sub>	±0.0175 ±0.0117		
Relative reversibility error <sup>2)</sup>	d <sub>hy</sub>	% of C <sub>N</sub>	±0.0166		
Non-linearity <sup>2)</sup>	d <sub>lin</sub>		±0.0166		
Minimum dead load output return	MDLOR		±0.0166		
Off-center load error <sup>3)</sup>	d <sub>cr</sub>		±0.0233		
Input resistance	R <sub>LC</sub>	Ω	380 ±15		
Output resistance	R <sub>0</sub>		360 ±10		
Reference excitation voltage	U <sub>ref</sub>	V	5		
Nominal (rated) range of the excitation voltage	B <sub>U</sub>		1 ... 12		
Maximum excitation voltage			15		
Insulation resistance at 100 V <sub>DC</sub>	R <sub>is</sub>	GΩ	>2		
Nominal (rated) range of the ambient temperature	B <sub>T</sub>	°C	-10 ... +40		
Operating temperature range	B <sub>tu</sub>		-20 ... +70		
Storage temperature range	B <sub>tl</sub>		-25 ... +90		
Limit load at max. 20 mm eccentricity	E <sub>L</sub>	% of E <sub>max</sub>	150		
Service load at max. 100 mm eccentricity			150		
Limit lateral loading, static	E <sub>lq</sub>		150		
Breaking load at max. 20 mm eccentricity	E <sub>d</sub>		>300		
Permissible oscillation stress at max. 20 mm eccentricity	F <sub>srel</sub>		70		
Resonance frequency, approx.	f <sub>G</sub>	Hz	540	630	790
Rated displacement at E <sub>max</sub> <sup>4)</sup>	s <sub>nom</sub>	mm	0.09	0.13	0.17
Weight, approx.	m	kg	1.2		
Material: measuring body seal			steel 1.4545 <sup>6)</sup> EPDM		
Equipment protection level <sup>7)</sup>			IP68 (test conditions 1 m water column / 100 h); IP69K (water at high pressure, steam cleaner) <sup>5)</sup>		

1) As per OIML R60, with P<sub>LC</sub> = 0.7

2) The values for non-linearity (d<sub>lin</sub>), relative reversibility error (d<sub>hy</sub>) and temperature coefficient of sensitivity (TCS) are recommended values. If these values are added together, the total is within the accumulated error limit laid down by OIML R60.

3) As per OIML R76

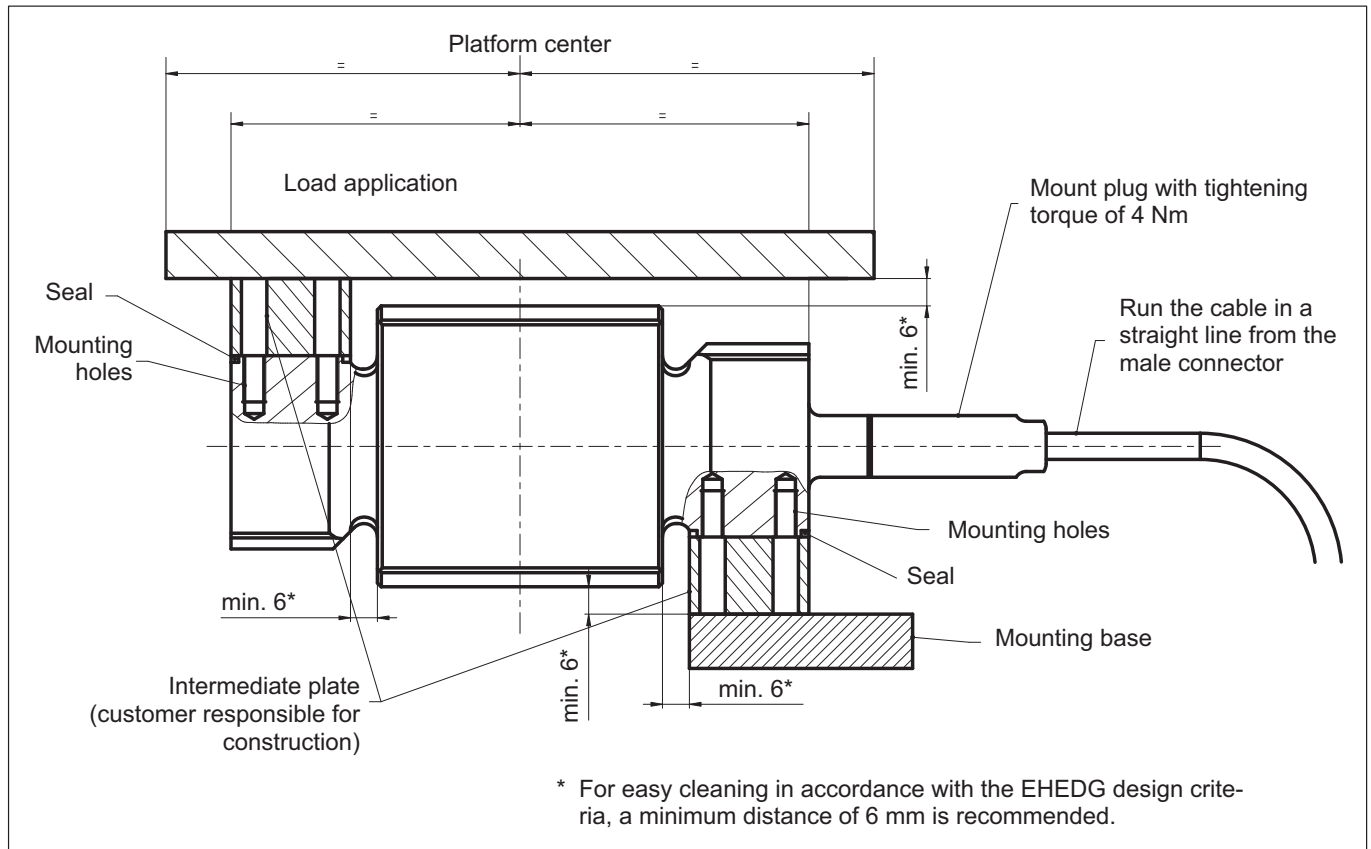
4) Loading with E<sub>max</sub> and center of gravity in center of load cell.

5) Based on DIN 40050, Part 9 specifications, for road vehicles.

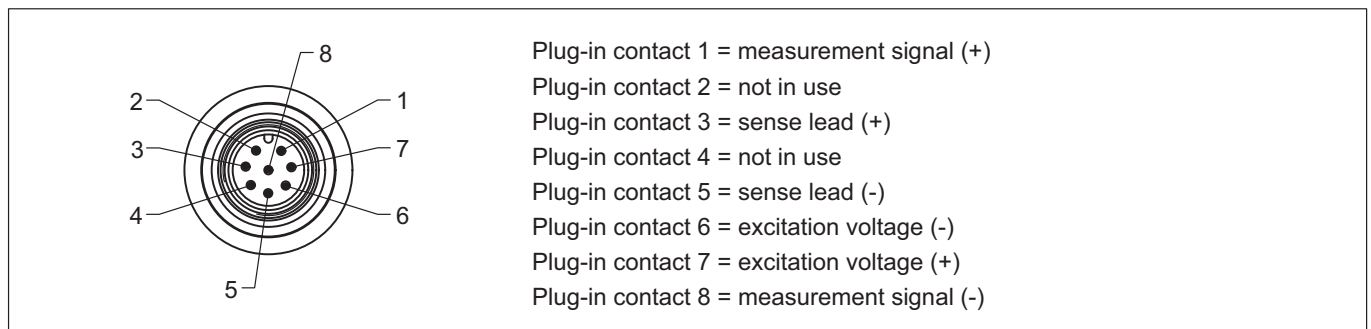
6) Per EN 10088-1

7) Per DIN EN 60529 (IEC 529)

## Installation advice



## Connector pin assignment



## Pin assignment 1-KAB175

Color code	Connection
White	Measurement signal (+)
Red	Measurement signal (-)
Blue	Excitation voltage (+)
Black	Excitation voltage (-)
Green	Sense lead (+)
Gray	Sense lead (-)

## Accessories

Connection cable	
Connection cable with M12 F male connector, 8-pin, stainless steel IP68/IP69K, hygiene design, 3 m long	1-KAB175-3-1
Connection cable with M12 F male connector, 8-pin, stainless steel IP68/IP69K, hygiene design, 6 m long	1-KAB175-6-1
Connection cable with M12 F male connector, 8-pin, stainless steel IP68/IP69K, hygiene design, 12 m long	1-KAB175-12-1

## Spare part

1 set of replacement seals, consisting of 2 seals (EPDM), ordering no. E-9278.0014

## Product numbers (overview)

Type	PW37P
Accuracy class	C3-MR (OIML)
Maximum capacity	Ordering number
50 kg	1-PW37PC3/50KG-1
100 kg	1-PW37PC3/100KG-1
200 kg	1-PW37PC3/200KG-1
Type	PW37PY
50 kg	1-PW37PY/50KG-1
100 kg	1-PW37PY/100KG-1
200 kg	1-PW37PY/200KG-1

Subject to modifications.  
All product descriptions are for general information only. They are not to be understood as a guarantee of quality or durability.

**Hottinger Brüel & Kjaer GmbH**  
Im Tiefen See 45 · 64293 Darmstadt · Germany  
Tel. +49 6151 803-0 · Fax +49 6151 803-9100  
Email: [info@hbm.com](mailto:info@hbm.com) · [www.hbm.com](http://www.hbm.com)

**measure and predict with confidence**

