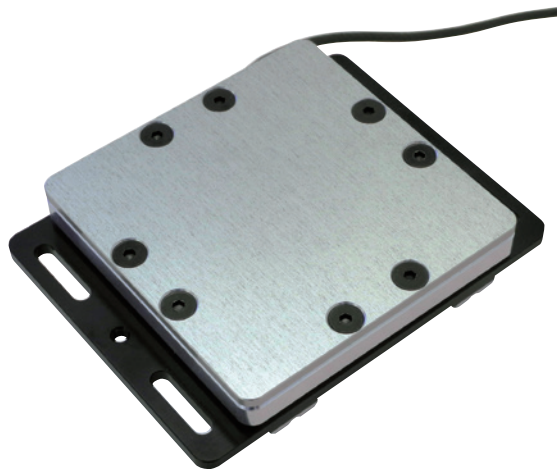


Thin Pedal Force Transducer

박형압력계

LPR-C



Specifications

Performance

Rated Capacity See table below.

Nonlinearity Within $\pm 0.3\%$ RO

Hysteresis Within $\pm 0.3\%$ RO

Rated Output See table below.

Environmental Characteristics

Safe Temperature -10 to 70°C (Non-condensing)

Compensated Temperature 0 to 50°C (Non-condensing)

Temperature Effect on Zero Within $\pm 0.05\%$ RO/°C

Electrical Characteristics

Safe Excitation 8 V AC or DC

Recommended Excitation 1 to 5 V AC or DC

Input Resistance 240 Ω $\pm 3\%$

Output Resistance 240 Ω $\pm 3\%$

Cable 4-conductor (0.05 mm²) heat-resistant vinyl shielded cable, 2.5 mm diameter by 3 m long, terminated with a connector plug PRC03-12A10-7M (Shield wire is not connected to the case.)

Mechanical Properties

Safe Overloads 150%

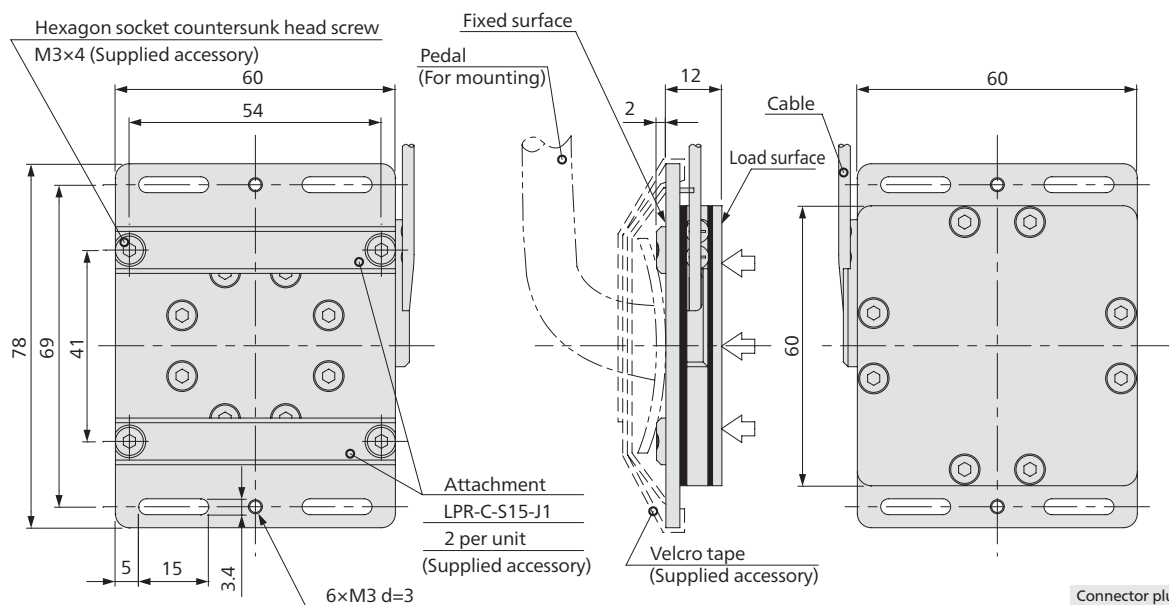
Weight Approx. 110 g (Excluding cable and accessories)

Models	Rated Capacity	Rated Output
LPR-C-02KNS15	200 N	Approx. 0.9 mV/V
LPR-C-03KNS15	300 N	
LPR-C-05KNS15	500 N	
LPR-C-1KNS15	1 kN	Approx. 1.8 mV/V
LPR-C-2KNS15	2 kN	

Easy installation, few errors by offset-load, and applicable for various shapes of pedal.

- Little influence on operation feeling due to thin profile and lightweight.
- Easy installation enables simple mounting to various shapes of brake pedal.
- Thin profile, thickness 12 mm
- Few errors by offset-load

Dimensions



Connector plug
PRC03-12A10-7M

