

The SP3 from Celesco is a compact, economical stringpot that provides a user selectable 4-20 mA or 0-10 Vdc output signal. Simply install this sensor using the handy mounting bracket and connect the appropriate wires for the desired output.

The SP3 is constructed with a rugged, water resistant polycarbonate body that has been compactly designed for tight spaces and generous measuring cable misalignment. With 4 different ranges, the SP3 is a perfect solution for many applications from light industrial to OEM. Just like all of our other SP and SE models, the SP3 is in stock ready to ship.

## SP3

### Compact String Pot • 4..20mA / 0..10Vdc

Linear Position to 50 inches (1270 mm)

User Selectable Output: 4–20 mA or 0–10Vdc

40-in. Electrical Cable • Free-Release Tolerant

In Stock for Quick Delivery!

### Specifications

**Full Stroke Range Options** 0-4.75, 0-12.5, 0-25, 0-50 inches

**User Selectable Output Signal** 4...20 mA (2-wire) / 0...10

**Vdc Input Voltage, 4...20 mA** 8-40 VDC

**option**

**Input Voltage, 0...10 Vdc** 12-32 VDC

**option**

**Accuracy**  $\pm 0.25$  to  $\pm 1.00\%$  (see part no. above)

**Repeatability Resolution**  $\pm 0.05\%$  full stroke

**Measuring Cable** essentially infinite

**Measuring Cable Tension** 0.019-in. dia. nylon-coated stainless steel 7 oz. (1.9 N)  $\pm 25\%$

**Maximum Cable Acceleration** 15 g

**Enclosure** Polycarbonate

**Material Sensor** plastic-hybrid precision

**Weight** potentiometer 5 oz. (w/o mounting bracket) max.

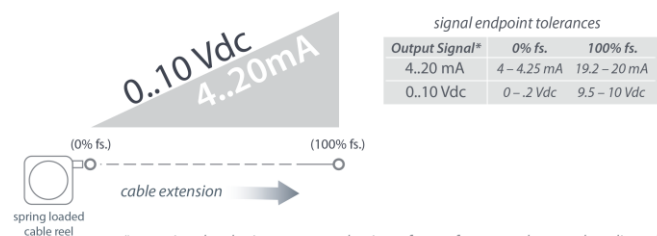
### Environmental

**Enclosure** IP 50

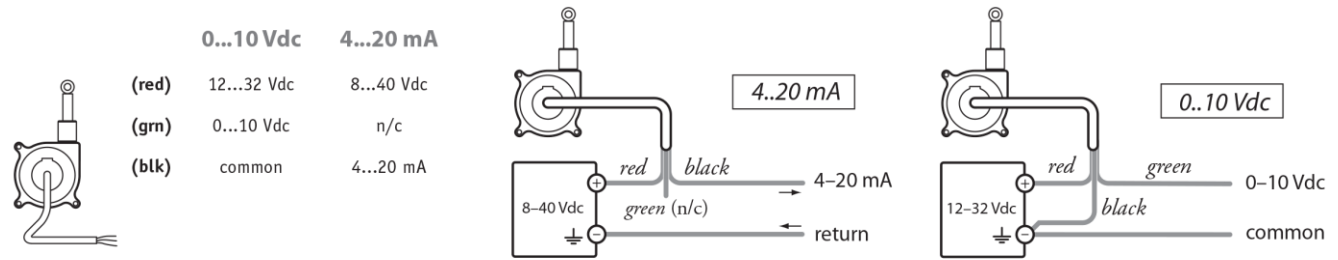
**Operating Temperature** 0° to 160°F (-18° to 71°C)

**Vibration** up to 10 g to 2000 Hz maximum

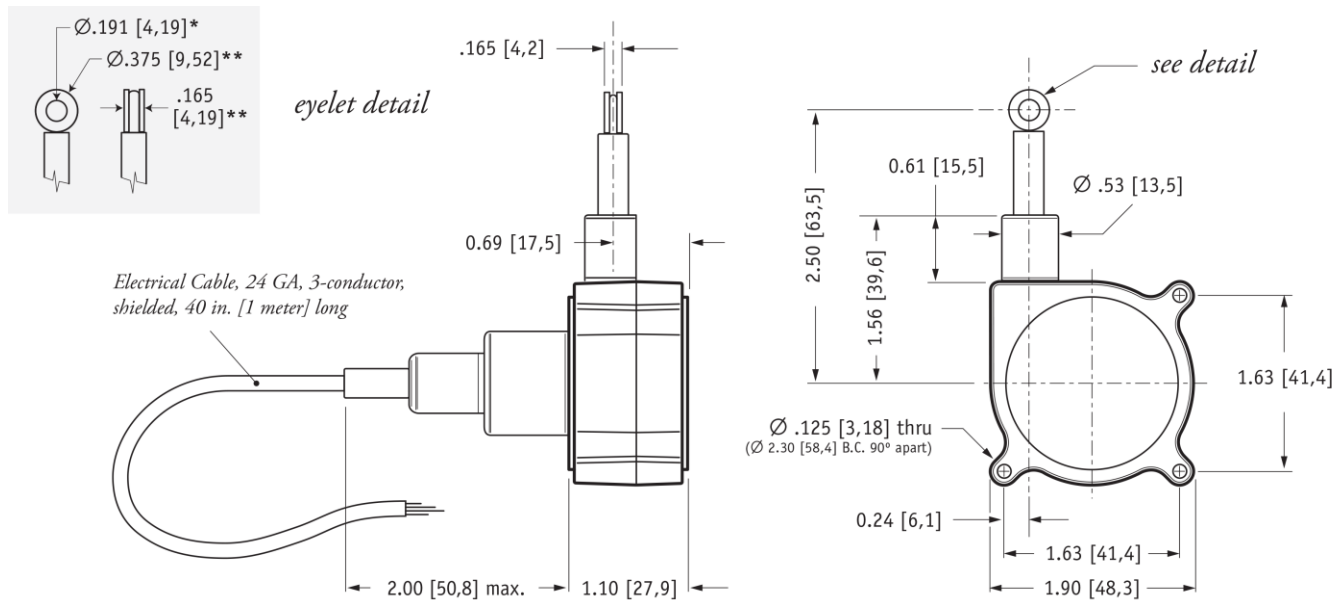
### Output Signal



## Electrical Connection



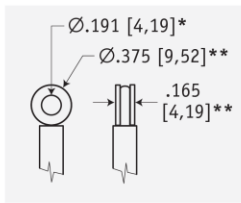
## Outline Drawing (w/o bracket)



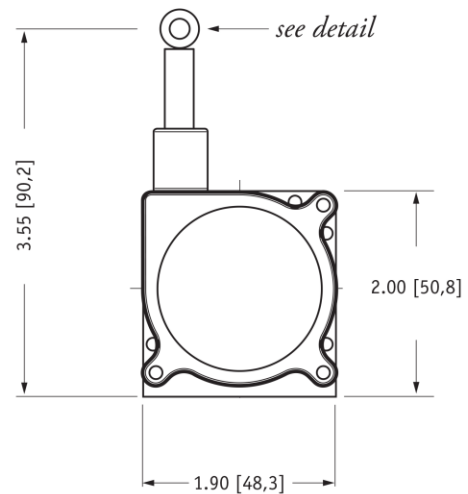
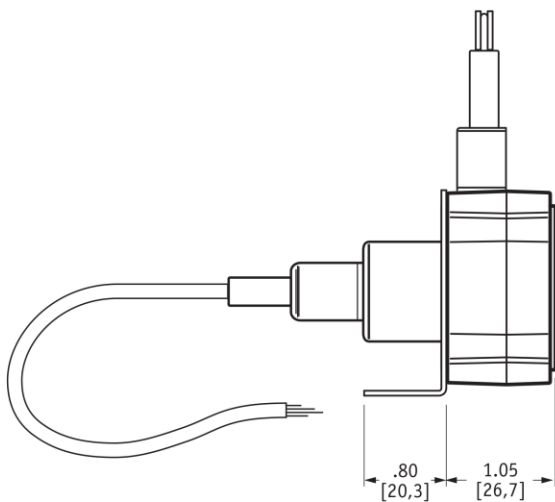
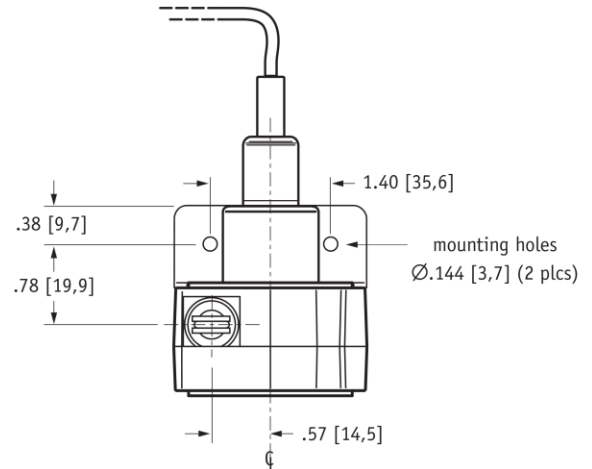
DIMENSIONS ARE IN INCHES [MM]  
tolerances are 0.04 IN. [1,0 MM] unless otherwise noted.

\* tolerance = +.005 -.001 [+0,1 -0,0]  
\*\* tolerance = +.005 -.005 [+0,1 -0,1]

## Outline Drawing (w/ bracket)

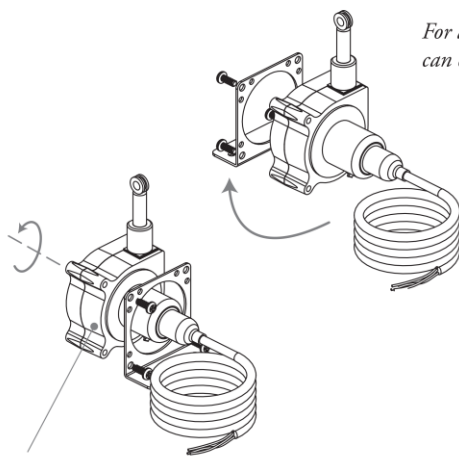


*eyelet detail*



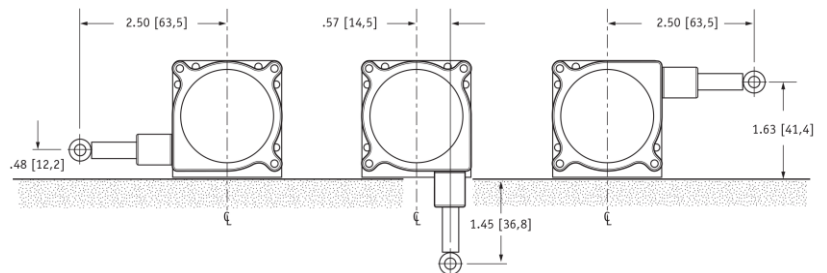
DIMENSIONS ARE IN INCHES [MM]  
tolerances are 0.04 IN. [1,0 MM] unless otherwise noted.

\* tolerance = +.005 -.001 [+0,1 -0,0]  
\*\* tolerance = +.005 -.005 [+0,1 -0,1]



*For added flexibility, mounting bracket can easily be switched to the opposite side.*

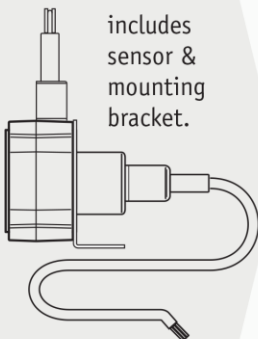
*To change measuring cable direction simply remove the 3 bracket attaching screws and rotate sensor body to desired direction.*



## SP3

Compact String Pot • 4..20mA / 0..10Vdc

### Ordering Information

|  includes sensor & mounting bracket. | Part No. | full stroke range | accuracy (% of f.s.) | cycle life  |
|---|----------|-------------------|----------------------|-------------|
|   | SP3-4    | 4.75 in (120 mm)  | 1.00%                | 2.5M cycles |
|   | SP3-12   | 12.5 in (317 mm)  | 0.25%                | 500K cycles |
|   | SP3-25   | 25 in (635 mm)    | 0.25%                | 500K cycles |
|   | SP3-50   | 50 in (1270 mm)   | 0.25%                | 250K cycles |

### [TE.com/sensorsolutions](http://TE.com/sensorsolutions)

Measurement Specialties, Inc., a TE Connectivity company.

Measurement Specialties, TE Connectivity, TE Connectivity (logo) and EVERY CONNECTION COUNTS are trademarks. All other logos, products and/or company names referred to herein might be trademarks of their respective owners.

The information given herein, including drawings, illustrations and schematics which are intended for illustration purposes only, is believed to be reliable. However, TE Connectivity makes no warranties as to its accuracy or completeness and disclaims any liability in connection with its use. TE Connectivity's obligations shall only be as set forth in TE Connectivity's Standard Terms and Conditions of Sale for this product and in no case will TE Connectivity be liable for any incidental, indirect or consequential damages arising out of the sale, resale, use or misuse of the product. Users of TE Connectivity products should make their own evaluation to determine the suitability of each such product for the specific application.

© 2015 TE Connectivity Ltd. family of companies All Rights Reserved.

SP3 12/01/2015