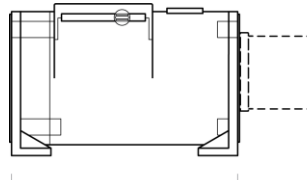


PT9600

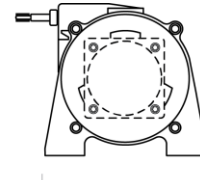
Cable Actuated Encoder Reel

모든 로터리 엔코더를 최대 550인치(14m)의 선형 위치 센서 선형 스트로크 범위로 변환

거의 모든 고객 제공 인코더 공장 제공 인코더 사용 가능



7.9" [200 mm]



5.3" [135 mm]

당사 고유의 스트링 엔코더 모듈은 거의 모든 엔코더와 결합하여 요구 사항에 정확히 맞는 비용 효율적인 장거리 선형 위치 측정 솔루션을 제공합니다.

이 모듈식 접근 방식은 최고의 유연성을 제공합니다. 주문하려면 측정 범위, 케이블 장력 및 엔코더 장착 스타일을 선택하기만 하면 됩니다. 정말 쉽습니다! 필요한 모든 인코더 장착 도구와 부착 하드웨어도 제공합니다. 엔코더 장착 스타일을 찾을 수 없거나 엔코더 제공을 원하시면 전화하십시오.

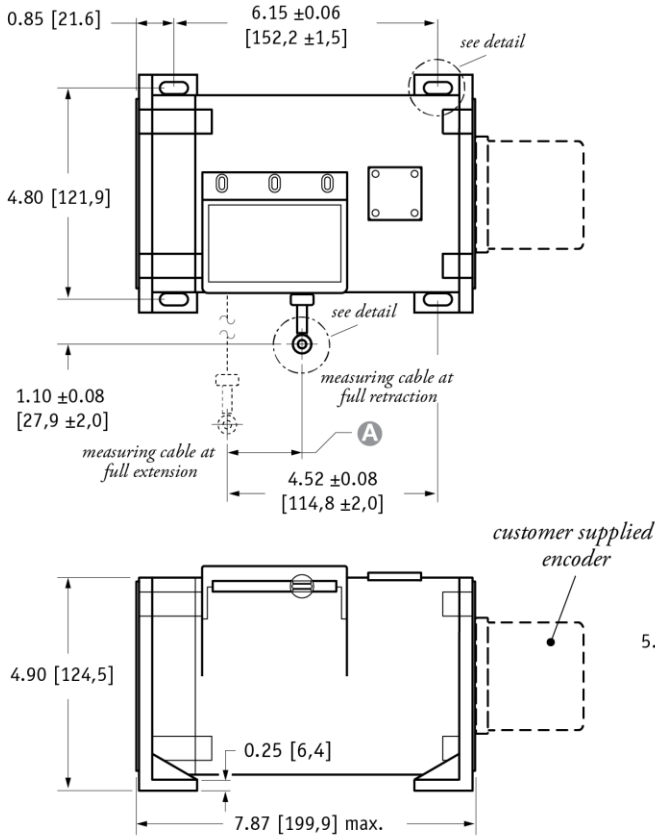
General

Full Stroke Range	0-75 to 0-550 inches
Motion Conversion Ratio	12.6 inches per turn, see ordering information
Accuracy	the lesser of $\pm 0.02\%$ f.s. or $\pm 0.04\%$ measurement $\pm 1/2$ pulse
Accuracy, best	not less than 0.001 in. (0.03mm)
Repeatability	$\pm 0.02\%$ of measurement $\pm 1/2$ pulse
Measuring Cable Options	see ordering information
Module Material Options	powder-painted aluminum or stainless
Encoder Coupling	aluminum flexible coupling
Maximum Allowable Rotational Sensor Torque	1.0 in-lbs.
Maximum Retraction Acceleration	see ordering information
Maximum Velocity	see ordering information
Weight, Aluminum (Stainless Steel) Enclosure	8 lbs. (16 lbs.) max.

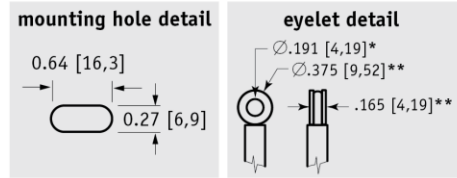
Environmental

Operating Temperature	-40° to 200°F (-40° to 90°C)
------------------------------	------------------------------

Fig. 1 – Outline Drawing (18 oz. cable tension only)

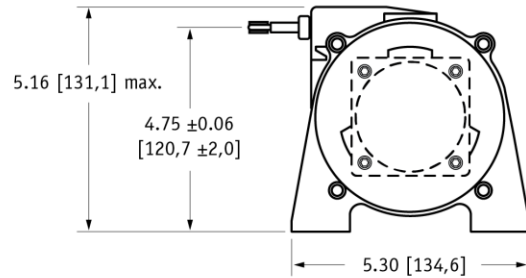


DIMENSIONS ARE IN INCHES [MM]
tolerances are 0.03 IN. [0.5 MM] unless otherwise noted.



A DIMENSION (INCHES)

MEASURING CABLE				
RANGE	Ø.031 in.	Ø.034 in.	Ø.047 in.	Ø.062 in.
75	n/a	0.22	0.29	0.37
100	n/a	0.29	0.39	0.49
150	n/a	0.44	0.59	0.73
200	n/a	0.58	0.79	0.98
250	n/a	0.73	0.98	1.22
300	n/a	0.88	1.18	1.47
350	n/a	1.02	1.38	1.71
400	n/a	1.17	1.57	1.96
450	n/a	1.31	1.77	n/a
500	n/a	1.46	1.97	n/a
550	1.61	1.61	n/a	n/a



* tolerance = +.005 -.001 [+,.13 -.03]
** tolerance = +.005 -.005 [+,.13 -.13]

VLS Option - Free Release Protection

특히 받은 Celesco VLS(Velocity Limiting System)는 PT9000 시리즈 케이블 연장 변환기 용 옵션으로, 케이블 후퇴를 단일 스프링 옵션의 경우 안전한 초당 40~55인치로 제한하고 장력이 높은 이중 스프링 옵션의 경우 초당 40~80인치로 제한합니다. .

VLS 옵션은 우발적인 자유 해제 중에 측정 케이블이 손상 속도에 도달하는 것을 방지합니다. 이 옵션은 빈번한 케이블 분리 및 재연결이 필요한 모바일 애플리케이션에 이상적입니다. 실수로 케이블을 잘못 취급하거나 연결 오류로 인해 비용이 많이 드는 예기치 않은 다운타임을 방지합니다..

1. using guide below, select PT9600 model **PT9600-0100-111-F01**
2. remove "PT" from the model number **~~PT~~ 9600-0100-111-F01**
3. add "VLS" **VLS + 9600-0100-111-F01**
4. completed model number! **VLS9600-0100-111-F01**

VLS9600-

	A	B	C	D
0075	1	1	1	F01
thru	2	2	2	F02
0550	3	3	3	S01
	4	4	4	S02
				S04

■ = available options.

PT9600

Cable Reel • String Encoder

Ordering Information

Model Number:

PT9600 - _____
order code: **R** **A** **B** **C** **D**

Sample Model Number:

PT9600 - 0200 - 111 - F01

- R** range: 200 inches
- A** enclosure / cable tension: aluminum / 18 oz.
- B** measuring cable: .034 nylon-coated stainless
- C** cable exit: front
- D** rotational sensor mounting style: F01 (2.5-in. sq. flange)

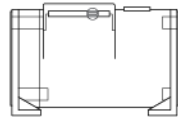
Full Stroke Range:

R order code:	0075	0100	0150	0200	0250	0300	0350	0400	0450*	0500*	0550*
full stroke range, min:	75 in.	100 in.	150 in.	200 in.	250 in.	300 in.	350 in.	400 in.	450 in.	500 in.	550 in.

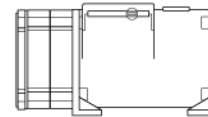
* - 36 oz. cable tension strongly recommended

Enclosure / Measuring Cable Tension:

A order code:	1	3	2	4
tension (±30%):	18 oz.		36 oz.	
enclosure material:	<i>powder-painted aluminum</i>	<i>303 stainless steel</i>	<i>powder-painted aluminum</i>	<i>303 stainless steel</i>
max. acceleration:	1 g	1 g	5 g	5 g
max. velocity:	60 inches/sec	60 inches/sec	200 inches/sec	200 inches/sec



standard housing
see fig 1.

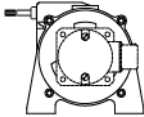
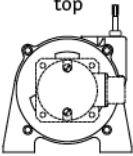
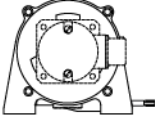
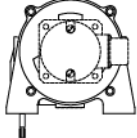


dual-spring housing
see fig 2.

Measuring Cable/ Conversion Ratio:

B order code:	1	2	3	4	
cable construction:	Ø.034-inch nylon-coated stainless steel rope	Ø.047-inch bare stainless steel rope	Ø.058-inch PVC jacketed vectra fiber rope	Ø.031-inch bare stainless steel rope	
available ranges:	<i>all ranges</i>	<i>all ranges up to 500 inches</i>	<i>all ranges up to 400 inches</i>	<i>550-inch range only</i>	
general use:	indoor	outdoor, debris, high temperature	high voltage or magnetic field	outdoor, debris, high temperature	
conversion ratio {	aluminum enclosure:	1 turn = 12.673 ± 0.016 in.	1 turn = 12.714 ± 0.016 in.	1 turn = 12.755 ± 0.016 in.	1 turn = 12.664 ± 0.016 in.
	stainless enclosure:	1 turn = 12.579 ± 0.022 in.	1 turn = 12.620 ± 0.022 in.	1 turn = 12.661 ± 0.022 in.	1 turn = 12.569 ± 0.022 in.

Cable Exit:

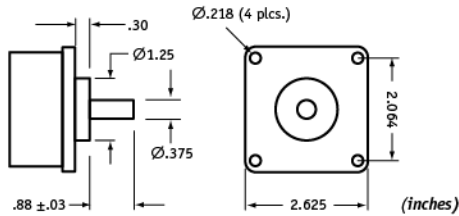
C order code:	1	2	3	4
	front	top	back	down
				

Rotational Sensor Mounting Style:

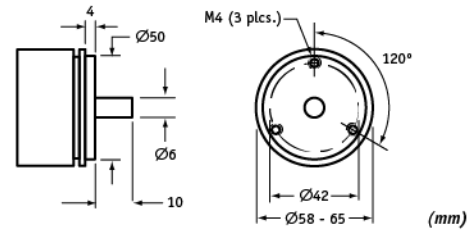
① order code:	F01	F02	S01	S02	S04
	2.5-in. Flange Mount 3/8-inch shaft	2-in. Flange Mount 3/8-inch shaft	Face-Mount 6 mm shaft M4 mounting screws	Face-Mount 10 mm shaft M4 mounting screws	Face-Mount 10 mm shaft M3 mounting screws

Note: If you don't see your encoder style, please contact factory. All encoder types supported.

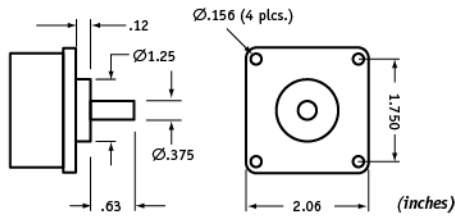
F01 - 2½-inch Sq. Flange Mount (3/8-inch shaft)



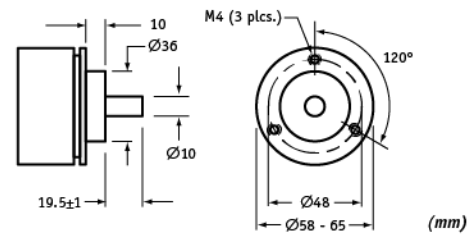
S01 - Face-Mount (6mm shaft/M4 screws)



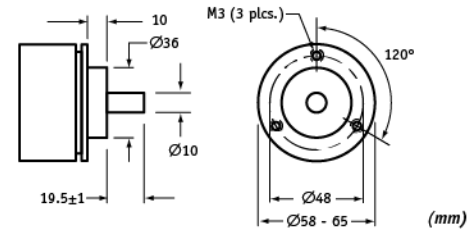
F02 - 2-inch Sq. Flange Mount (3/8-inch shaft)



S02 - Face-Mount (10mm shaft/M4 screws)



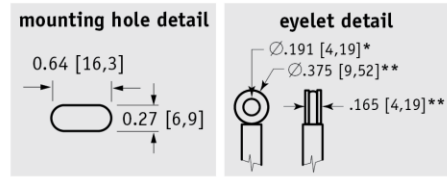
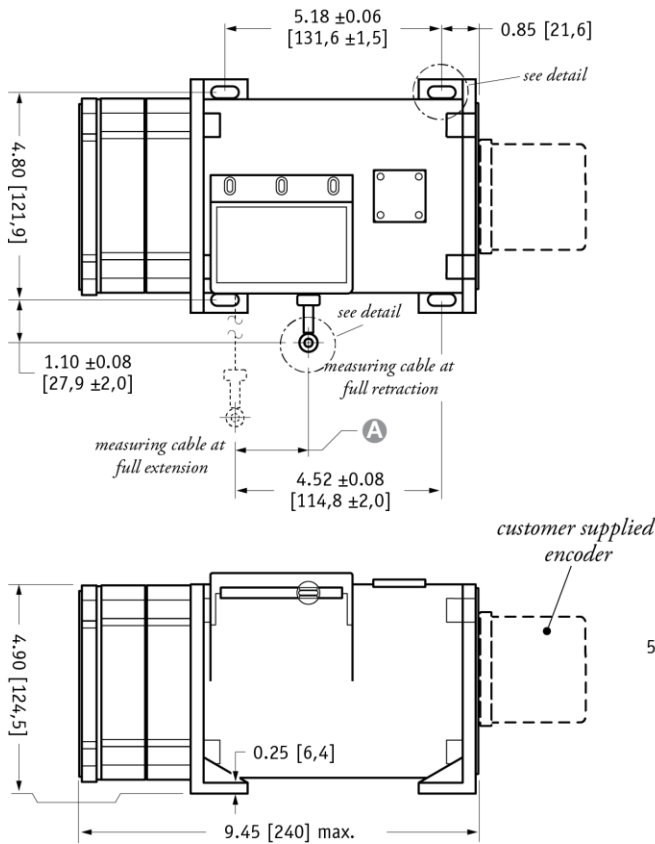
S04 - Face-Mount (10mm shaft/M3 screws)



PT9600

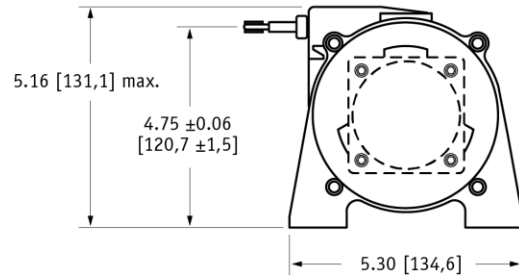
Cable Reel • String Encoder

Fig. 2 – Outline Drawing (36 oz. cable tension only)



A DIMENSION (INCHES)

MEASURING CABLE				
RANGE	Ø.031 in.	Ø.034 in.	Ø.047 in.	Ø.062 in.
75	n/a	0.22	0.29	0.37
100	n/a	0.29	0.39	0.49
150	n/a	0.44	0.59	0.73
200	n/a	0.58	0.79	0.98
250	n/a	0.73	0.98	1.22
300	n/a	0.88	1.18	1.47
350	n/a	1.02	1.38	1.71
400	n/a	1.17	1.57	1.96
450	n/a	1.31	1.77	n/a
500	n/a	1.46	1.97	n/a
550	1.61	1.61	n/a	n/a



DIMENSIONS ARE IN INCHES [MM]
tolerances are 0.03 IN. [0.5 MM] unless otherwise noted.

* tolerance = +.005 -.001 [+.13 -.03]
** tolerance = +.005 -.005 [+.13 -.13]

NORTH AMERICA

Measurement Specialties, Inc.,
a TE Connectivity company
20630 Plummer Street
Chatsworth, CA 91311
Tel +1 800 423 5483
Tel +1 818 701 2750
Fax +1 818 701 2799
info@celesco.com

TE.com/sensorsolutions

Measurement Specialties, Inc., a TE Connectivity company.

Measurement Specialties, TE Connectivity, TE Connectivity (logo) and EVERY CONNECTION COUNTS are trademarks. All other logos, products and/or company names referred to herein might be trademarks of their respective owners.

The information given herein, including drawings, illustrations and schematics which are intended for illustration purposes only, is believed to be reliable. However, TE Connectivity makes no warranties as to its accuracy or completeness and disclaims any liability in connection with its use. TE Connectivity's obligations shall only be as set forth in TE Connectivity's Standard Terms and Conditions of Sale for this product and in no case will TE Connectivity be liable for any incidental, indirect or consequential damages arising out of the sale, resale, use or misuse of the product. Users of TE Connectivity products should make their own evaluation to determine the suitability of each such product for the specific application.

© 2015 TE Connectivity Ltd. family of companies All Rights Reserved.

PT9600 12/01/2015