

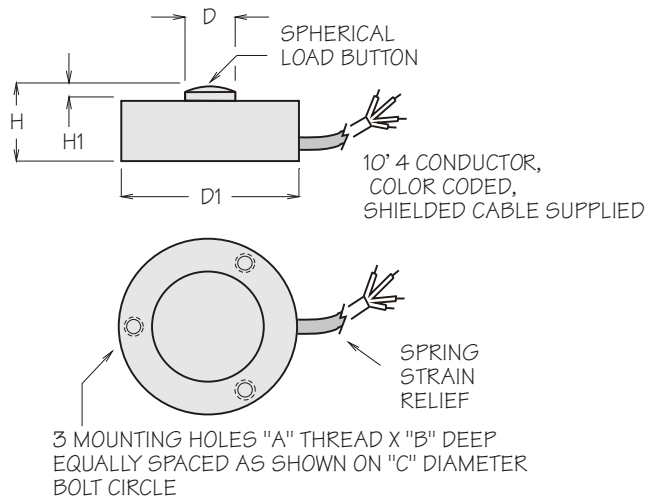
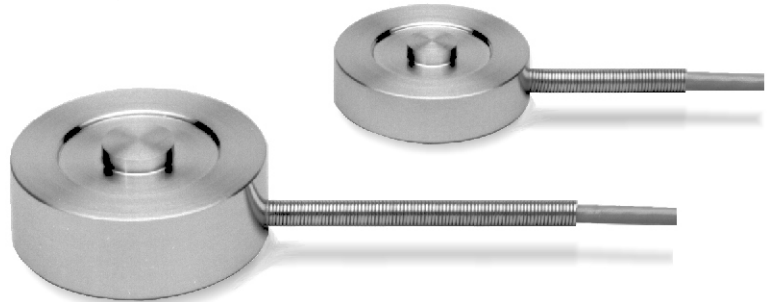
LOW PROFILE COMPRESSION ONLY LOAD BUTTON

LBO SERIES

CAPACITY RANGES:

100, 250, 500, 750, 1,000, 2,000, 3,000,
5,000, 10,000, 15,000, 20,000, 30,000,
50,000 LBS.

The LBO Series (Load Button) load cells are offered for compression only applications where space is limited. Matching surface must be flat and at least the diameter of (D1). The loading diameter (D2) is slightly convex for accurate load distribution. Threaded mounting holes are provided on the bottom surface for fastening down from beneath. These sensors are manufactured from heat treated 17-4ph stainless steel and sealed for use in most industrial environments.



SPECIFICATIONS

Rated Output (R.O.):	2 mV/V nominal
Nonlinearity:	0.25% of R.O.
Hysteresis:	0.25% of R.O.
Nonrepeatability:	0.1% of R.O.
Zero Balance:	1.0% of R.O.
Compensated Temp. Range:	60° to 160°F
Safe Temp. Range:	-65° to 200°F
Temp. Effect on Output:	0.005% of Load/°F
Temp. Effect on Zero:	0.01% of R.O./°F
Terminal Resistance:	350 ohms nominal
Excitation Voltage:	10 VDC
Safe Overload:	150% of R.O.

DIMENSIONS (INCHES)

MODEL	CAPACITY LBS.	D DIA.	D1 DIA.	H	H1	BUTTON RADIUS	A THREAD UNC	B THREAD DEPTH	C BOLT CIRCLE	NATURAL RINGING FREQUENCY HZ	DEFLECTION INCHES	WT. OZS.
LB0-100A	100	.21	1.000	.40	.05	2.0	4-40	.22	.750	25,000	.001	1.0
LB0-100	100	.32	1.240	.40	.07	2.0	6-32	.22	1.000	25,000	.001	1.2
LB0-250	250	.32	1.240	.40	.07	2.0	6-32	.25	1.000	25,000	.001	1.2
LB0-500	500	.32	1.240	.40	.07	2.0	6-32	.25	1.000	28,000	.001	1.2
LB0-750	750	.32	1.240	.40	.07	2.0	6-32	.25	1.000	28,000	.001	1.2
LB0-1K	1,000	.32	1.240	.40	.07	2.0	6-32	.25	1.000	32,000	.001	1.3
LB0-2K	2,000	.32	1.240	.40	.07	2.0	6-32	.25	1.000	32,000	.001	1.3
LB0-3K	3,000	.45	1.490	.62	.08	4.0	6-32	.25	1.250	28,000	.002	3.0
LB0-5K	5,000	.45	1.490	.62	.08	4.0	6-32	.25	1.250	22,000	.002	3.0
LB0-10K	10,000	.45	1.490	.62	.08	4.0	6-32	.25	1.250	24,000	.002	3.0
LB0-15K	15,000	.60	1.990	1.00	.12	6.0	6-32	.25	1.625	20,000	.002	8.0
LB0-20K	20,000	.60	1.990	1.00	.12	6.0	6-32	.25	1.625	20,000	.002	9.0
LB0-30K	30,000	.60	1.990	1.00	.12	6.0	6-32	.25	1.625	15,500	.002	9.0
LB0-50K	50,000	.80	2.990	1.50	.18	6.0	6-32	.25	2.375	10,000	.003	33.0