

ACCURATE / HIGH RELIABILITY IN HARSH MARINE & INDUSTRIAL ENVIRONMENTS LOAD PIN

CLP SERIES

Our CLP Series load pins are used most often where pins or large bolts would normally be carrying the load. Typical applications would include replacement for shackle pins, clevis pins, and pulley shafts. These load pins are made from heat treated 17-4ph stainless steel and incorporate a stainless steel molded connector system for use in harsh industrial environments. The mating connector, sold separately, is available in three different cable lengths.



CAPACITY RANGES:
750, 1,500, 3,000, 6,000,
12,500, 18,000, 30,000 LBS.



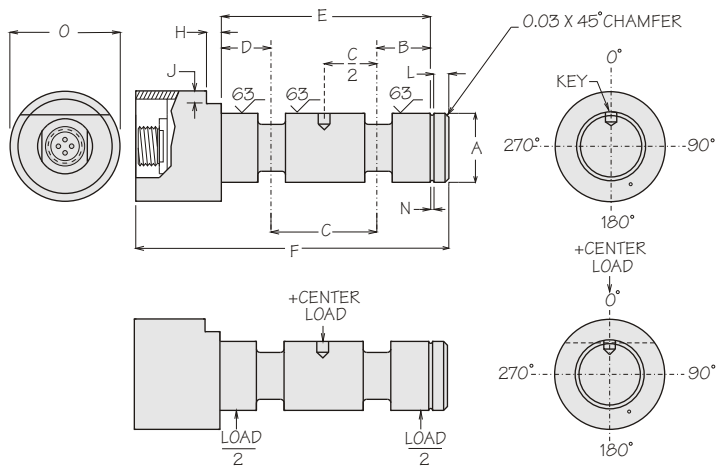
CAPACITY RANGES:
50,000, 75,000, 100,000,
125,000, 160,000,
200,000 LBS.

TYPICAL APPLICATIONS

Crane Load Monitor	Sprocket Axle
Front End Loaders	Crane Cargo Hook
Tow Bar Connection	Connecting Rod
Railroad Couplings	Forklifts
Conveyor Belt Rollers	Mooring Line Tension
Clevis Joints	Tow Line Tension

SPECIFICATIONS

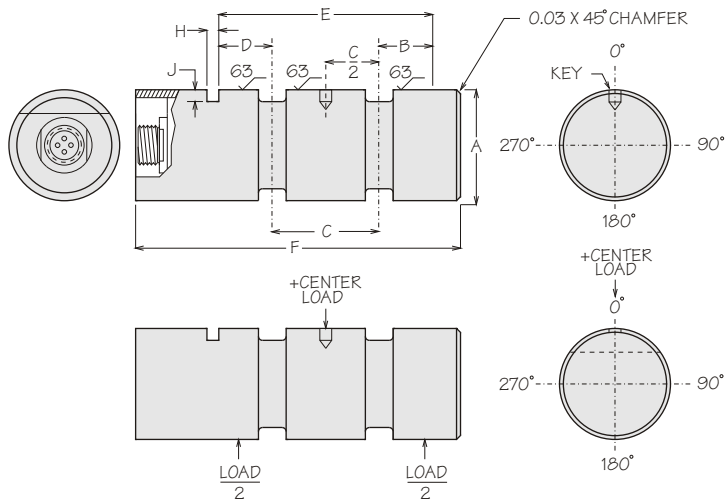
Rated Output (R.O.):	2 mV/V nominal
Nonlinearity:	0.50% of R.O.
Hysteresis:	0.50% of R.O.
Nonrepeatability:	0.15% of R.O.
Zero Balance:	1.0% of R.O.
Compensated Temp. Range:	60° to 160°F
Safe Temp. Range:	-65° to 200°F
Temp. Effect on Output:	0.008% of Load/°F
Temp. Effect on Zero:	0.003% of R.O./°F
Terminal Resistance:	350 ohms nominal
Excitation Voltage:	10 VDC
Safe Overload:	150% of R.O.



Anti-Rotation & Retaining Device

In pins with a diameter less than 2 inches, the Keeper Plate used at dimension H & J (provides and maintains proper angular alignment of Load Pin in regard to load direction) will retain in one direction only, requiring a Retaining Ring.

		DIMENSIONS (INCHES)										SNAP RING GROOVE			
MODEL	CAPACITY LBS.	A DIA.	B	C	D	E	F	H	J	KEY DIA.	L	DIA.	N	O DIA.	
CLP-750	750	.375	.41	.56	.41	1.38	3.69	.20	.25	N/A	.31	.352	.029	2.00	
CLP-1.5K	1,500	.375	.41	.56	.41	1.38	3.69	.20	.25	N/A	.31	.352	.029	2.00	
CLP-3K	3,000	.500	.50	.75	.50	1.75	4.00	.20	.25	N/A	.25	.468	.039	2.00	
CLP-6K	6,000	.750	.59	1.00	.59	2.18	4.50	.20	.25	.156	.31	.704	.046	2.00	
CLP-12.5K	12,500	1.000	.63	1.00	.63	2.26	4.75	.20	.25	.219	.50	.940	.046	2.00	
CLP-18K	18,000	1.250	.81	1.38	.81	3.00	5.63	.27	.25	.219	.63	1.176	.056	2.00	
CLP-30K	30,000	1.500	.94	1.63	.94	3.51	6.13	.27	.25	.281	.63	1.406	.056	2.00	
		+.000													
		-.002													



Anti-Rotation & Retaining Device

In pins with a diameter 2 inches and over, the Keeper Plate used at dimension H & J (provides and maintains proper angular alignment of Load Pin in regard to load direction) alone will perform as a complete Retainer.

CAPACITY		DIMENSIONS (INCHES)								KEY
		A	B	C	D	E	F	H	J	
MODEL	LBS.	DIA.								DIA.
CLP-50K	50,000	2.000	1.00	2.00	1.00	4.00	6.63	.266	.38	.281
CLP-75K	75,000	2.500	1.25	2.50	1.25	5.00	7.63	.266	.50	.281
CLP-100K	100,000	2.750	1.47	2.69	1.47	5.63	8.38	.406	.50	.406
CLP-125K	125,000	3.000	1.44	3.00	1.44	5.88	8.75	.406	.63	.406
CLP-160K	160,000	3.500	1.75	3.50	1.75	7.00	10.00	.531	.63	.531
CLP-200K	200,000	4.000	2.25	4.00	2.25	8.50	11.75	.531	.75	.531
		+.000								
		-.002								