



Displacement Transducer

# DTT-A/DTS-A

**NEW**

## DTT-A: Potentiometer-type

## DTS-A: Strain type

- ☐ Improving creepage
- ☐ For tension and compression
- ☐ Fast response



(DC to 50 Hz when the tip is fixed)

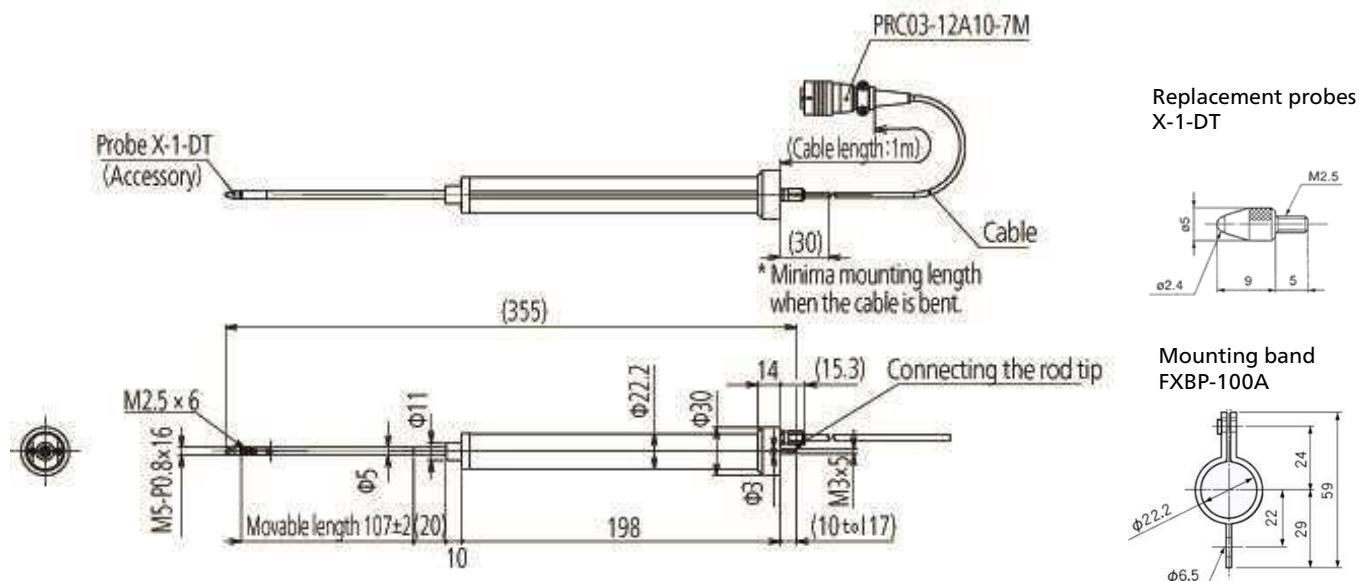
### Specifications

Models	DTT-A-100	DTS-A-100
Types	Potentiometer	Strain
Performance		
Rated capacity	100mm	
Nonlinearity	Within $\pm 0.2\% \text{RO}$	Within $\pm 0.3\% \text{RO}$
Hysteresis	Within $\pm 0.2\% \text{RO}$	Within $\pm 0.3\% \text{RO}$
Repeatability	0.1%RO or less	
Rated Output	0.9 V/V $\pm$ 10%	2.5 mV/V $\pm$ 10% (5000 $\mu\text{m}/\text{m} \pm$ 10%)
Environmental Characteristics		
Safe Temperature	-10 to 70 °C (Noncondensing)	
Compensated Temperature	0 to 60 °C (Noncondensing)	
Temperature Effect on Zero	Within $\pm 0.05\% \text{ RO / } ^\circ \text{C}$	
Temperature Effect on Span	Within $\pm 0.05\% / ^\circ \text{C}$	
RoHS Directive	EN50581	
Electrical characteristics		
Safe Excitation	36 VDC (At 23°C)	10 V AC or DC
Recommended Excitation	2 to 10 VDC	1 to 5 V AC or DC
Resistance	1 k $\Omega \pm$ 20%	Input resistance: 350 $\Omega \pm$ 3% Output resistance: 255 $\Omega \pm$ 10%
Cable	4-conductor (0.08 mm <sup>2</sup> ) vinyl shielded cable, 3.2 mm diameter by 1 m long, terminated with connector plug. (Shielded wire is not connected to case)	
Mechanical Properties		
Frequency Response	DC to approx. 6 Hz (When the gage head is touching to the testing machine, displacement: 100 mm) (Reference: DC to approx. 50 Hz) (When the gage head is fixed, displacement is 30 mm.)	
Measuring Force	Approx. 5 N	
Weight	Approx. 110 g (Excluding cable)	
Degrees of Protection	IP40 equivalency (IEC 60529 )	

### ◆Standard Accessories

Probe: X-1-DT, 1 PC      Adapter 1 PC  
Mounting band 2 PC

## Dimensions



## Options for displacement transducers

### ◆ Replacement probes

XS-5-DT



H-1-DT



SH-2-DT



XS-105-DT



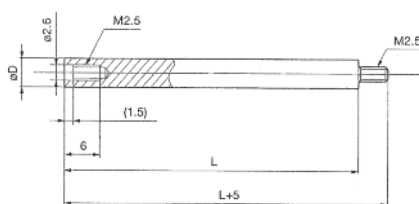
XS-2-DT



XS-6-DT



### ◆ Extension rods



Mode I	$\phi D$	L
EB-50	4	50
EB-100	5	100
EB-200	6	200
EB-300	6	300

## Kyowa Electronic Instruments Co., Ltd.

Overseas Department:  
 3-5-1, Chofugaoka, Chofu, Tokyo 182-8520 Japan  
 TEL: +81-42-489-7220 FAX: +81-42-488-1122  
 E-mail: overseas@kyowa-ei.co.jp  
 Web: <http://www.kyowa-ei.com/>



### Safety Precautions

Be sure to observe the safety precautions given in the instruction manual, in order to ensure correct and safe operation.

• Specifications are subject to change without notice for improvement.

E\_H27-06e



JQA-0821  
 JQA-EM4824

Manufacture's Representative

December 2016