

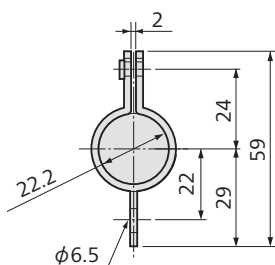
## Displacement Transducer

**DTT-A: Potentiometer output**  
**DTS-A: Strain-gage output**



- Reduce creep
- Both tension and compression
- Fast response (DC to 50 Hz when the tip is fixed)

### ■ Mounting Band FXBP-100A



## Specifications

## Performance

<b>Rated Capacity</b>	100 mm
<b>Nonlinearity</b>	See table below.
<b>Hysteresis</b>	See table below.
<b>Repeatability</b>	0.1% RO or less
<b>Rated Output</b>	See table below.

## Environmental Characteristics

Safe Temperature	-10 to 70°C (Non-condensing)
Compensated Temperature	0 to 60°C (Non-condensing)
Temperature Effect on Zero	Within $\pm 0.05\%$ RO/°C
Temperature Effect on Output	Within $\pm 0.05\%$ /°C

## Electrical Characteristics

<b>Safe Excitation</b>	See table below.
<b>Recommended Excitation</b>	See table below.
<b>I/O Resistance</b>	See table below.
<b>Cable</b>	4-conductor (0.08 mm <sup>2</sup> ) vinyl shielded cable, 3.2 mm diameter by 1 m long, terminated with a connector plug PRC03-12A10-7M (Shield wire is not connected to the case.)

## Mechanical Properties

<b>Frequency Response</b>	DC to approx. 6 Hz (When the tip is touching to the testing machine, displacement: 100 mm) (Reference: DC to approx. 50 Hz, when the tip is fixed, displacement: 30 mm)
<b>Measuring Force</b>	Approx. 5 N
<b>Weight</b>	Approx. 110 g (Excluding cable)
<b>Degree of Protection</b>	IP40 (IEC 60529)

**Standard Accessories** Mounting band FXBP-100A: 2  
Adapter: 1

### Optional Accessories

Extension rods: EB-50, EB-100, EB-200, EB-300

Mounting band FXBP-100A

Replacement probes: X, XS, SH

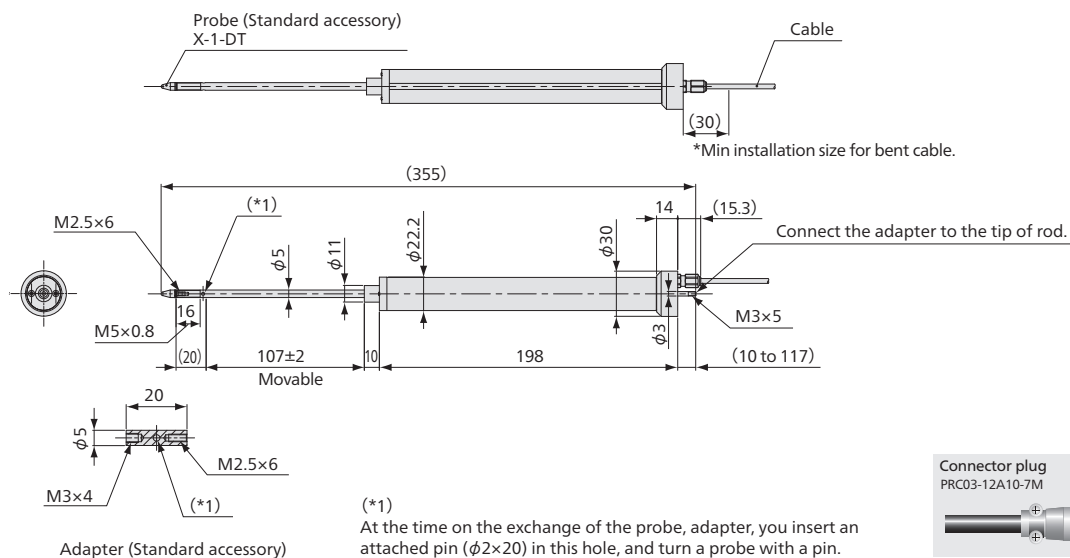
(Note 1) Do not apply any displacement in other than expansion/contraction direction of the rod.

(Note 2) For DTT-A, a measuring instrument applicable for potentiometer or voltage signals is required.

Models	Nonlinearity	Hysteresis	Rated Output	Safe Excitation	Recommended Excitation	Resistance
●DTT-A-100	Within ±0.2% RO	Within ±0.2% RO	0.9 V/V±10% (Voltage output)	36 VDC (at 23°C)	2 to 10 VDC	1 k Ω ±20%
●DTS-A-100	Within ±0.3% RO	Within ±0.3% RO	2.5 mV/V ±10%	10 V AC or DC	1 to 5 V AC or DC	In: 350 Ω ±3% Out: 255 Ω ±10%

●For delivery date, please contact us.

## ■ Dimensions



Connector plug  
PRC03-12A10-7M

