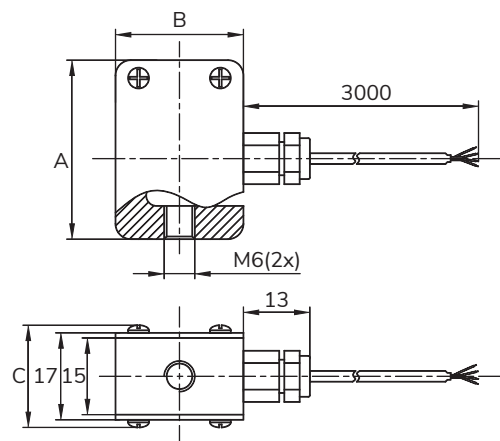




DIMENSIONS



FEATURES & APPLICATIONS

- For In Line Use In Both Tension And Compression
- Notable Nonlinearity
- Light Weight, Miniature Size
- Mainly Used For Pull And Push Dynamometer And Industrial Measuring Systems

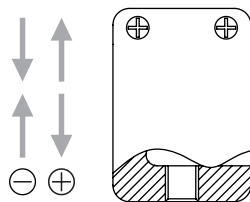
CAPACITIES

CAP (Kg)	SIZE (mm)	A	B	C	Material
1/2/3/5/10/15/20/50	35	25	20		Aluminium Alloy
5/10/15/20/50					Alloy steel

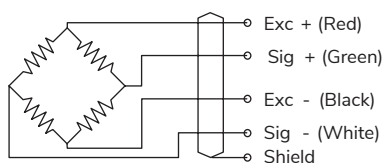
SPECIFICATIONS

PERFORMANCE	
Non-Linearity	±0.05% of RO
Hysteresis	±0.05% of RO
Repeatability	±0.05% of RO
Creep (30min)	±0.05% of RO
Zero Balance	±2% of RO
ELECTRICAL	
Rated Output	2.0 ± 10% mV/V
Recommended Excitation	5 VDC
Maximum Excitation	10 VDC
Input Impedance	410 ± 10 Ω (Aluminium Alloy) 385 ± 10 Ω (Alloy steel)
Output Impedance	350 ± 5 Ω
Insulation	≥5000 MΩ / 100 VDC
Cable Color Code	Input: Red (E+) Black (E-) Output: Green (S+) White(S-)
MECHANICAL	
Weight	0.1Kg
Safe Overload	120% of RO
Ultimate Overload	200% of RO
Material	See Table Above
Cable Size	Ø3 x 3000 mm
IP Rating	IP65
TEMPERATURE	
Operating Temperature	-20 ~ 80°C
Compensated Temp.Range	-10 ~ 60°C
Temp. Effect On Output	±0.025% of RO / 10°C
Temp. Effect On Zero	±0.025% of RO / 10°C
CONFORMITY	
RoHS	2011/65/EU
CE	2014/35/EU

LOAD DIRECTION



SCHEMATIC WIRING DIAGRAM



Note: Cable shield is not connected to element.