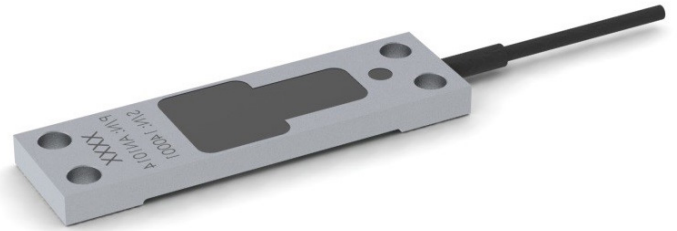


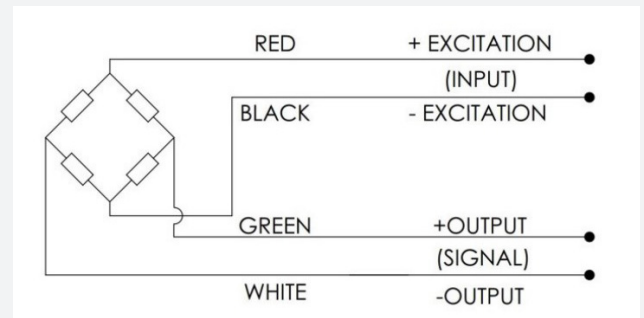
STRAIN TRANSDUCER ST500

스트레인 트랜스듀서는 롤 스탠드, 사출 성형기 및 크레인과 같이 높은 힘을 측정해야 하는 정적 및 동적으로 부하가 걸리는 응용 분야에서 변형을 측정하도록 설계되었습니다. 4개의 볼트로 평평한 면에 직접 장착할 수 있습니다. 굽힘 효과를 보상해야 하는 곳에는 두 개의 반대 방향으로 장착된 스트레인 트랜스듀서를 사용해야 합니다.

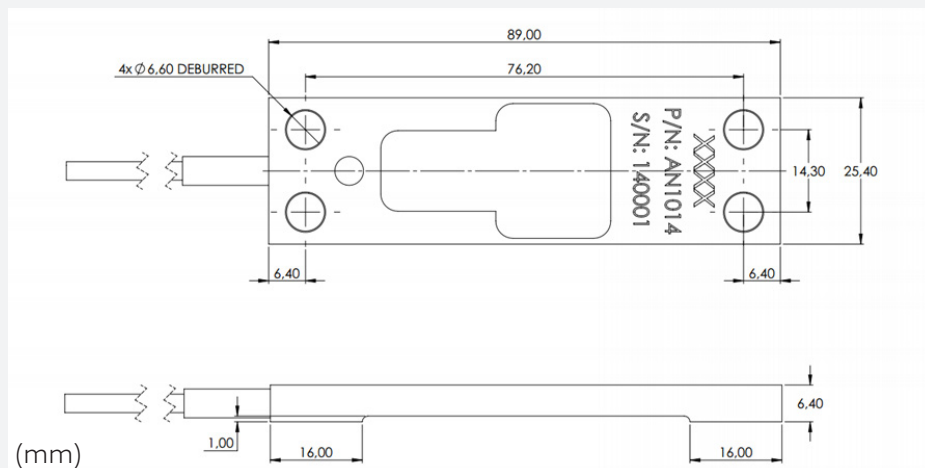


WIRING

- The strain transducer is provided with a 4 core 28 AWG cable, shield connected to housing



DIMENSIONS



STRAIN TRANSDUCER

SPECIFICATION

PARAMETER	ST500/6	ST500/12	NOTES
Measuring Range ($\mu\text{m}/\text{m}$)	0-500		
Sensitivity (mV/V)	1.5 ± 0.15		
Zero Signal Error (%)	5 FS		
Reversibility Error (%)	0.5 FS		
Linearity Error (%)	0.5 FS		
Zero Temperature Coefficient (%)	0.01 FS/ $^{\circ}\text{C}$		
Span Temperature Coefficient (%)	0.02 of load/ $^{\circ}\text{C}$		
Compensated Temperature ($^{\circ}\text{C}$)	-15 to +70		Ideal operating temperature range
Operating Temperature ($^{\circ}\text{C}$)	-20 $^{\circ}\text{C}$ to +70		
Output Resistance (ohm)	1000 ± 10		
Input Resistance (ohm)	>1000		
Insulation Resistance (ohm)	> 5×10^{10}		
Excitation (V)	2-15		
Maximum Operating Strain ($\mu\text{m}/\text{m}$)	750		
Breaking Strain ($\mu\text{m}/\text{m}$)	1500		
Degree of Protection	IP65		
Mounting Bolt Tightening Torque (Nm)	16		At least 8Nm
Cable Length (m)	6	12	