

# BHC-200T

Canister Load Cell  
200 tf



## FEATURES

- Robust design and easy installation
- Strong against shock

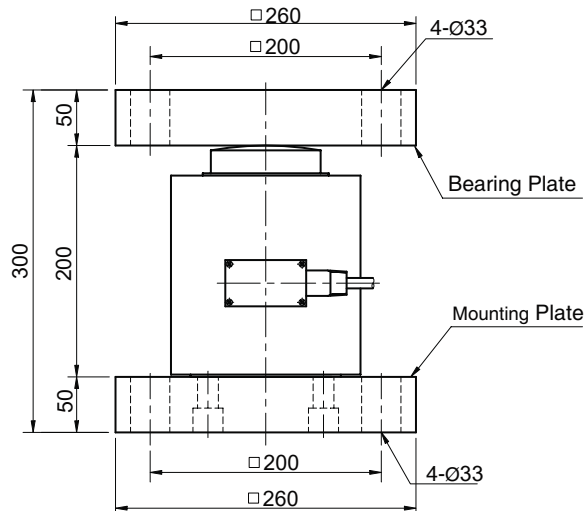
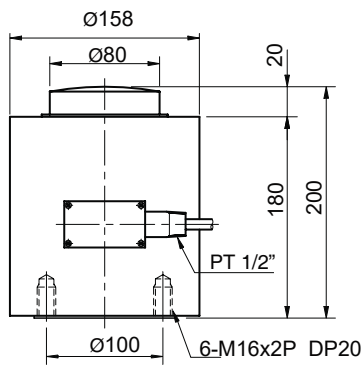
## Material

- Paint finished steel

## Cable

- Braided shield 4-wire round cable with PVC - jacket

## DIMENSIONS



## SPECIFICATIONS

모 델	BHC-200T
정격용량 (R.C.)	200t
정격출력 (R.O.)	1.5mV/V $\pm$ 0.0075mV/V
비직선성	$\leq 0.1\%$ R.O.
히스테리시스	$\leq 0.1\%$ R.O.
반복성	$\leq 0.1\%$ R.O.
크리이프	$\leq 0.1\%$ in 20min.
제로발란스	$\leq 1\%$ R.O.
온도보상범위	-10 ~ 40°C
허용온도범위	-20 ~ 80°C
출력의 온도영향	$\leq 0.03\%$ LOAD/10°C
영점의 온도영향	$\leq 0.03\%$ R.O./10°C
입력간저항	350 Ohms $\pm$ 5 Ohms
출력간저항	350 Ohms $\pm$ 5 Ohms
절연저항	2000 MOhms at 50V DC
인가전압	10V(Recommended), 15V(Maximum)
연결케이블	Ø8mmx5m(22AWG x 4Core Shielded)
보호등급	meets IP 67
허용과부하	150% R.C
극한과부하	300% R.C

